



# Furon<sup>®</sup> Large Check Valve

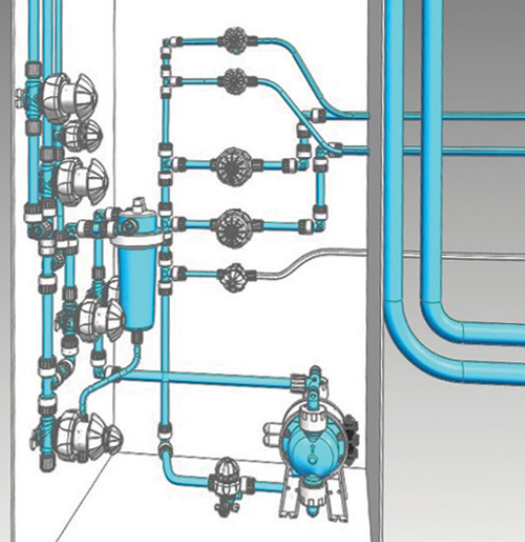
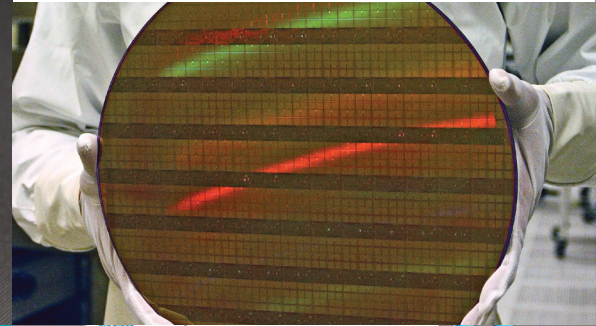
## Media Actuated Molded, (1/2", 3/4" & 1" Orifice)

### Description

Furon Large Check Valves are injection molded high-purity valves which allow fluids to pass in only one direction, preventing back flow. Available in 1/2", 3/4" and 1" orifice sizes, our Large Check Valves feature 100% metal-free and elastomer-free construction and high purity PFA wetted flow path. Compact design allows for easy inline installation. Furon Large Check Valves are engineered for use in fluid temperatures up to 250°F (121°C) and operating pressures up to 120 PSIG (8.3 bar).

### Applications

- To prevent drain-down of chemical delivery lines
- To prevent backflow in process delivery
- Transfer of aggressive or ultrapure chemicals commonly used in the Semiconductor and Chemical Processing industries



### Features and Benefits

- 100% high-purity PFA construction
- Metal and O-Ring free design
- <2 PSIG (0.14 bar) cracking pressure
- Zero dead volume body seal with no wetted thread areas
- 250°F (121°C) maximum temperature rating
- High-purity PFA spring

ASK AN ENGINEER

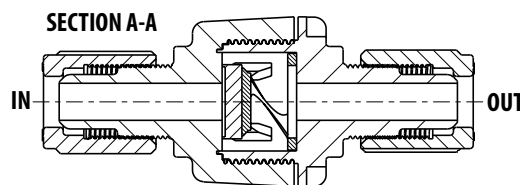
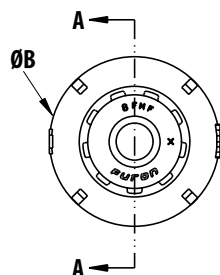
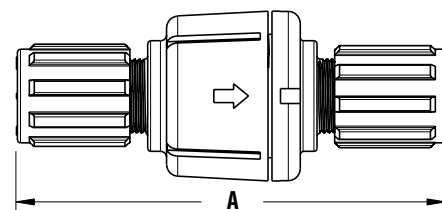
## Furon Large Check Valve

Description	End Connection	Orifice (in)	Port Size (in)	A	ØB
LCVMF-88	FlareGrip® II	1/2	1/2	4.40" (111.76 mm)	1.72" (43.69 mm)
LCVMF-1212	FlareGrip® II	3/4	3/4	4.60" (116.84 mm)	2.20" (55.88 mm)
LCVMF-1216	FlareGrip® II	3/4	1	4.70" (119.38 mm)	2.20" (55.88 mm)
LCVF-1616	FlareGrip® II	1	1	5.50" (139.70 mm)	2.20" (55.88 mm)
LCVM-788	FuseBond™	1/2	1/2	4.35" (110.49 mm)	1.72" (43.69 mm)
LCVM-71212	FuseBond™	3/4	3/4	4.20" (106.68 mm)	2.20" (55.88 mm)
LCVM-71216	FuseBond™	3/4	1	4.20" (106.68 mm)	2.20" (55.88 mm)
LCVM-S30088	Nippon Pillar Super 300*	1/2	1/2	Please contact us	Please contact us
LCVM-S3001212	Nippon Pillar Super 300*	3/4	3/4	Please contact us	Please contact us
LCVM-S3001216	Nippon Pillar Super 300*	3/4	1	Please contact us	Please contact us
LCV-S3001616	Nippon Pillar Super 300*	1	1	Please contact us	Please contact us

## Ordering & Technical Specifications

Operating Pressure	150 psig (10.3 bar)
Back Pressure	150 psig (10.3 bar)
Cracking Pressure	<2 psig (0.14 bar)
Min. Sealing Cracking Pressure	<10 psig (0.7 bar)
Cv Flow Factor	3.7 - 13
Max. Operating Temperature	Ambient: 149°F (65°C) Media: 250°F (121°C)
Body	PFA*
Spring	PFA*

\* Machined version uses PTFE



## Options

- Other end connections not listed. [Please consult factory](#) for details >>
- Add a -3 for PFA nut on Flare configuration



**Saint-Gobain Performance Plastics**  
7301 Orangewood Avenue  
Garden Grove, CA 92841  
1-800-833-5661  
Tel: (714) 630-5818  
Fax: (714) 688-2614

[www.furon.com](http://www.furon.com)

**NOTE:** The data and details given in this document are correct and up to date. This document is intended to provide information about the product and possible applications. This document is not the product specification and does not provide specific features, nor does it guarantee product performance in specific applications. Saint-Gobain cannot anticipate or control the conditions of the field and for this reason strongly recommends that practical tests are conducted to ensure that the product meets the requirements of a specific application.

Furon®, FlareGrip® and FuseBond™ are registered trademarks of Saint-Gobain Performance Plastics. Nippon Pillar Super 300® is a registered trademark of Nippon Pillar Packing Co.

**IMPORTANT:** It is the user's responsibility to ensure the suitability and safety of Saint-Gobain Performance Plastics products for all intended uses and that the components to be used comply with all applicable regulatory requirements. Saint-Gobain Performance Plastics assumes no responsibility for any product failures that occur due to misuse arising out of the design, fabrication or application of the products into which they are incorporated.

**WARRANTY:** *If Product is Purchased by Customer for use:* Saint-Gobain warrants that the Product Specifications is for a period of 18 months, provided Customer can establish that the Product did not conform to Specification at time of delivery and the non-conformance of the Product to Specification has not been caused as a result of any action or inaction by the Customer or Customer's storage conditions. *If Product is Purchased by Distributor or Reseller:* Saint-Gobain warrants that the Product Specifications for a period of 18 months, provided Distributor can establish that the Product did not conform to Specification at time of delivery and the non-conformance of the Product to Specification has not been caused as a result of any action or inaction by the Distributor/Reseller or its or because of storage conditions under which the Product is stored at Distributor/Reseller's and/or Customer/End User's storage facility. THIS IS THE EXCLUSIVE WARRANTY AND IS EXPRESSLY IN LIEU OF ANY AND ALL OTHER OBLIGATIONS, GUARANTEES, WARRANTIES AND REPRESENTATIONS. SAINT-GOBAIN PERFORMANCE PLASTICS DISCLAIMS ALL IMPLIED WARRANTIES OF MERCHANTABILITY AND FITNESS FOR A PARTICULAR PURPOSE.